

# CPV Ag+CCV Ag+Giardia Ag Combo Rapid Test (CPV-CCV-GIA)

Catalog No.: JCA014D

## ✧ INTENDED USE

The CPV Ag+CCV Ag+Giardia Combo Rapid Test is a lateral flow immunochromatographic assay for the differential diagnosis of canine Parvo virus antigen (CPV Ag), canine Coronavirus antigen (CCV Ag) and Giardia antigen (GIA Ag) in dog's feces or vomit specimen.

Assay Time: 5-10 minutes

## ✧ PRINCIPLE

The CPV Ag+CCV Ag+Giardia Combo Rapid Test is based on sandwich lateral flow immunochromatographic assay. The test device has a testing window for the observation of assay running and result reading. The testing window has an invisible T (test) zone and a C (control) zone before running the assay. When the treated sample was applied into the sample hole on the device, the liquid will laterally flow through the surface of the test strip and react with the pre-coated monoclonal antibodies. If there is CPV, CCV or GIA antigen in the specimen, a visible T line will appear. In this way, the device can accurately indicate the presence of Parvo virus antigen, Coronavirus antigen or Giardia antigen in the specimen.

## ✧ REAGENTS AND MATERIALS

- Test devices, with disposable droppers
- Assay buffer
- Cotton swabs
- Products Manual

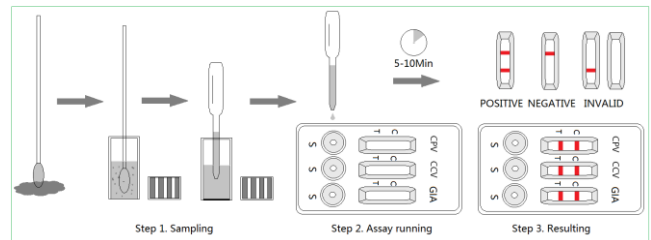
## ✧ STORAGE AND STABILITY

The kit can be stored at room temperature (4-30°C). The test kit is stable through the expiration date (24 months) marked on the package label. DO NOT FREEZE. Do not store the test kit in direct sunlight.

## ✧ TEST PROCEDURE

- Collect dog's fresh feces or vomit with the cotton swab from dog's anus or from the ground.
- Insert the swab into the provided assay buffer tube. Agitates it to get efficient sample extraction.
- Take out the test device from the foil pouch and place it horizontally.
- Suck the treated sample extraction from the assay buffer tube and place 3 drops into each sample hole "S" of the test device.

- Interpret the result in 5-10 minutes. Result after 10 minutes is considered as invalid.



## ✧ INTERPRETATION OF RESULTS

- Positive (+): The presence of both "C" line and zone "T" line, no matter T line is clear or vague.
- Negative (-): Only clear C line appear. No T line.
- Invalid: No colored line appears in C zone. No matter if T line appears.

## ✧ PRECAUTIONS

- All reagents must be at room temperature before running the assay.
- Do not remove test cassette from its pouch until immediately before use.
- Do not use the test beyond its expiration date.
- The components in this kit have been quality control tested as standard batch unit. Do not mix components from different lot numbers.
- All specimens are of potential infection. It must be strictly treated according to the rules and regulations by local states.

## ✧ LIMITATION

CPV Ag+CCV Ag+Giardia Combo Rapid Test is for in vitro veterinary diagnosis use only. All result should be considered with other clinical information available with veterinarian. It is suggested to apply a further confirmative method when positive result was observed.



J&G Biotech Ltd (Reg. No.: 08419172)

326 Cleveland Road, London, England E18 2AN, UK